



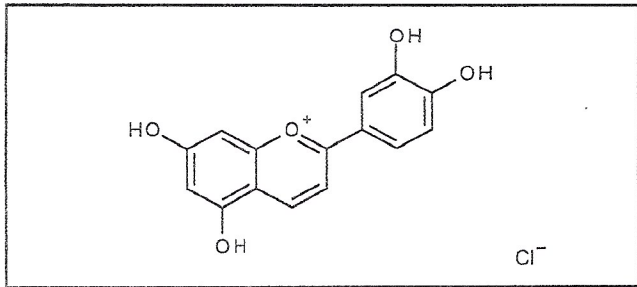
INDOFINE Chemical Company, Inc.

121 Stryker Lane, Bldg. 30
Hillsborough, NJ 08844 USA
Phone: (908) 359-6778; Fax: (908) 359-1179

Certificate Of Analysis

020925S **LUTEOLINIDIN CHLORIDE** **Lot No.: 22092913**

CAS RN	1154-78-5
MOL FORMULA	C ₁₅ H ₁₁ O ₅ Cl
MOL WEIGHT	306,68

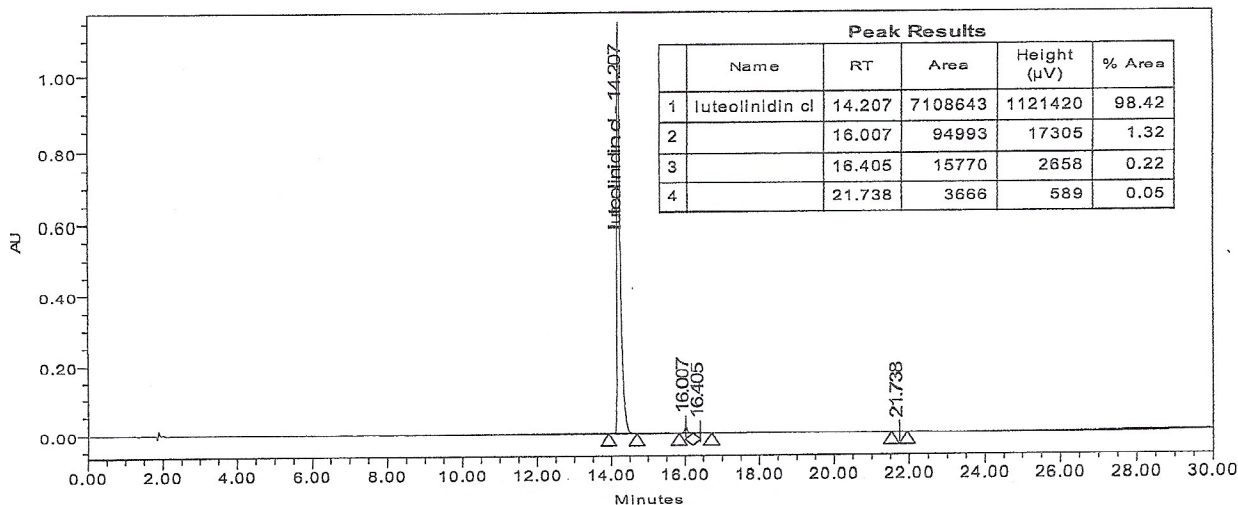


TEST	METHOD	UNIT	SPECIFICATION	RESULT
Appearance	Visual		Dark powder	Conform
Potency	UV		ε (499 nm, MeOH+0,1% HCl) = 36500 +/- 3000	37710
Water content	KF	% w/w		5,0
Residual solvents	GC-HS	% w/w		0,1
Inorganics	ICP-MS	% w/w		0,1
Purity	HPLC	% area	≥ 95,0	98,4
Assay	Calculated (*)	% w/w		93,3

(*) Assay = Purity by HPLC x (100 - %water - %solvents - %inorganics)

CHROMATOGRAPHIC PURITY / HPLC

Column : Atlantis dC18 - 4,6x150 mm - 3 μm Temperature : 30°C
 Mobile phase : Gradient: B from 5% to 60% in 20 min then 60% to 100% in 5 min then 5 min isocratic 100% Flow rate : 1 ml/min
 A = Water + 10% HCOOH / B = MeOH Injection volume : 5 μl
 Detection : UV 485 nm Injection solvent : MeOH + 0,1% HCl



LONG TERM STORAGE : Below -15°C in a dry and dark place